

Collections 2030

Empowering and enriching collections

TAKO 10th anniversary seminar
11.10.2019, Helsinki

Kimmo Antila
Museum director
Finnish Postal Museum





Kannisto Väinö. ,Helsinki City Museum
November 1944.

Do museum collections change? No, they just grow in numbers!
"Object bulimia" (Janne Vilkkuna, 2007)



Change in society, change in museums

Museums have turned from **object-centred** to phenomenon-centred and further to **society-centred work**, which has greatly increased the participatory role of audience.

How has this effected on collections?

Sometimes the the work is more visible in other activities. Displays change, but objects are not always in the central role.

Open storages?

New role for the collections?

Digitalization gives new opportunities



Collection development and collections policies

Discussion, new practisies, policies, objectives and co-operation!

Evaluation system in Tampere (1998) Palo-oja & Wilberg

TAKO network (2009)

KDK (2011), National Digital Library

Museum 2015 (2011)

Good practisies for disposal. Finnish Museum Association in coopertion with various museums (2015)

Analysing significance (2015) Häyhä, Jantunen & Paaskoski

A Checklist for Museum Collections Management Policy (2015) Ekosaari, Jantunen & Paaskoski

Nina Robbins Doctoral thesis on disposals and value discussion (2016)

ETC. And a lot of work in grassroot level, TAKO one of the key promoters of the activities.



Finnish "talkoo-tradition"
New roof for museum in Keitele.
FINNA, Keiteleen kunnankirjasto

Repatriating the collections

Re-homing the collections

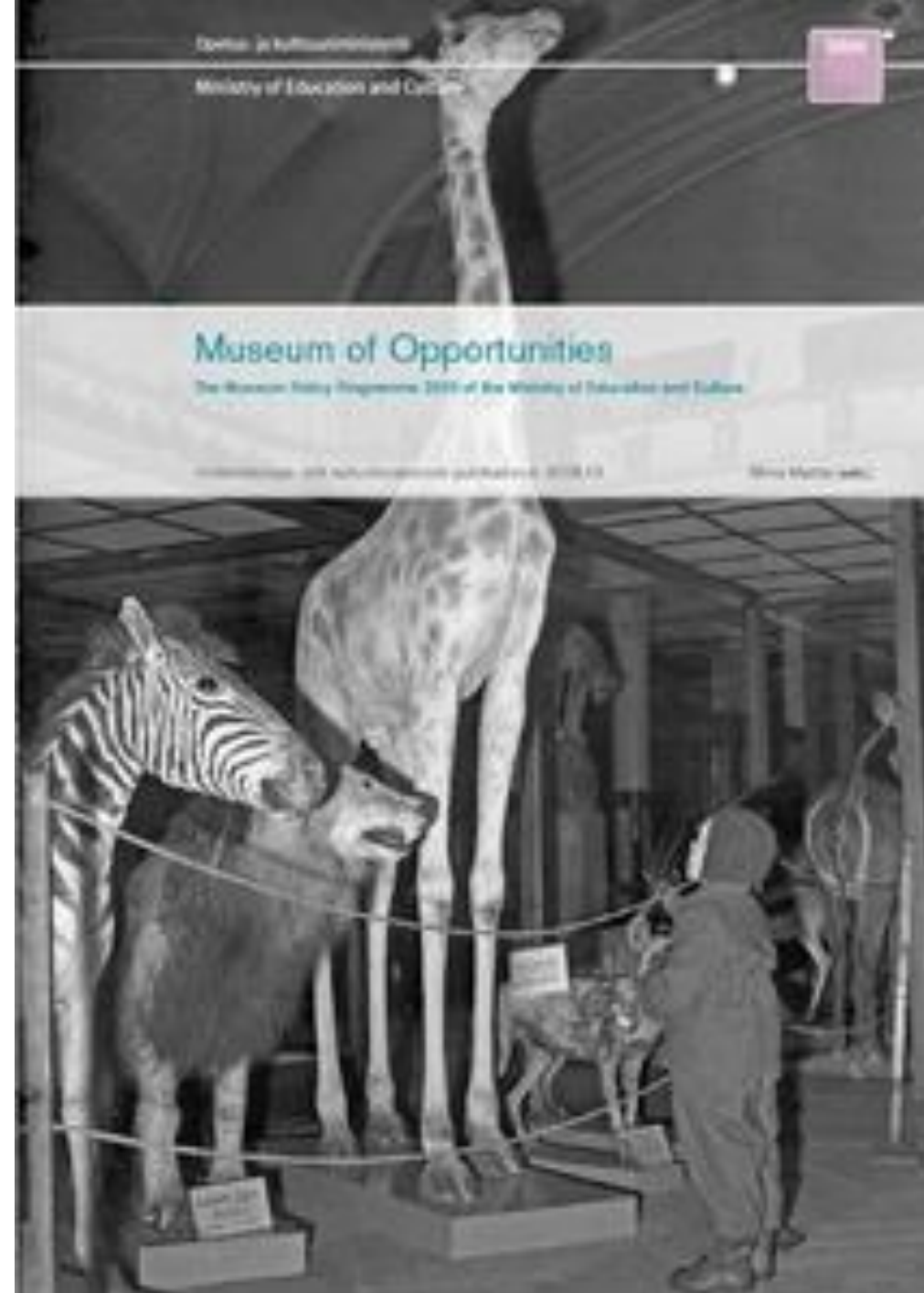
Museum centre Vapriikki repatriated the hat to the Sámi Museum Siida 2015.

Finnish National Museum has the similar programme for Sami material

The ancestral remains of **Native American tribes of Mesa Verde National Park** home will be repatriated as part of an agreement between Finland and the United States published last week.

Sarvilakki (Sámi horn hat) is a headdress that resembles the shape of a horn. Sarvilakki was worn by Sámi women until the end of the 1800s, but, according to the common belief, went out of use later, as Christian priests did not approve the usage of a hat resembling a horn of the devil.





Ambitious museum policy 2018 in Finland (Ministry of Education and Culture)

***“Finland will have the most up-to-date museums
and the most enthusiastic clients in Europe in 2030.”***

At the same time renewal of Museum Act and resources (VOS).

Implementing the proposals of the museum policy programme will require ***collaboration and discussion between different actors*** and between all the relevant parties. ...will be of benefit in local and regional development as well as in planning and outlining operations.

How you see this development in UK scale? Could this be deployed in the whole museum field? What are the challenges?

1

A culture change in museums and collections practice

2

A proactive approach to the democratisation and decolonisation of museums

3

A focus on reinterpretation of out-of-date displays

4

Research to understand public expectations of collections

5

Strategic collecting in partnership with communities

6

A strategic approach to online collections

7

Use collections projects to create social impact, embed knowledge and build legacy

8

Support partnerships and knowledge sharing

9

Improve training and funding for the rationalisation of museum collections

10

Improve transparency and accessibility of museum collections online

11

Explore shared storage solutions

EMPOWERING COLLECTIONS

- Empowering Collections
- Relevant Collections
- Dynamic Collections



Collection is “Museum of Opportunities”

- Showcasing and utilizing museum collections
- Collaboration in Collection management
- Collections as resources for research
- Storage facilities, conservation and collection management



Ecologically sustainable solutions in newly built or renovated buildings

Centralized collection centers



Thank you!

Good luck in implementation of your strategy
and let's hope for reasonable resources
for museum

both in UK and in Finland!

Let's keep up the correspondence and exchange
of ideas between us.

Kimmo.Antila@postimuseo.fi

